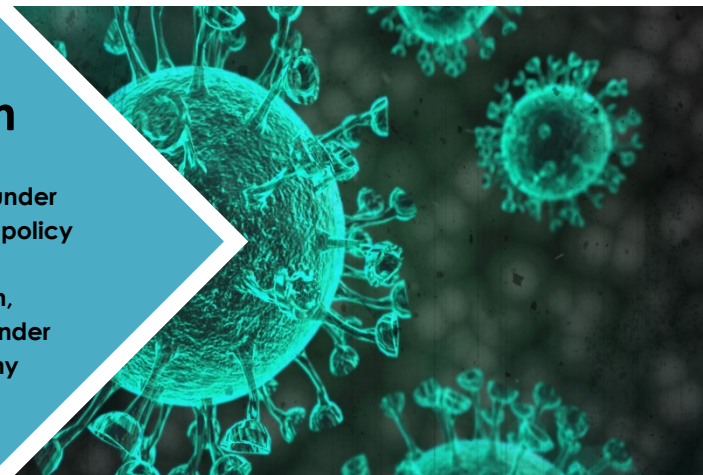


General Coronavirus Prevention



DOSH Directive 1.70 General Coronavirus Prevention under Stay Home-Stay Healthy Order provides enforcement policy when evaluating workplace implementation of social distancing, facial coverings and respiratory protection, Sanitation and sick employee practices as required under the Governor's Proclamation: Stay Home – Stay Healthy Order.



Employers who continue operations under the Order are required to maintain coronavirus prevention practices consistent with DOSH, OSHA, and Department of Health guidance. Coronavirus is recognized as a very serious workplace hazard.

WORKPLACE CHANGES EFFECTIVE IN JUNE 2020

Most workers in Washington will have to wear a mask or face covering at work under new coronavirus workplace safety and health requirements that take effect June 8, 2020.

With some exceptions, workers must wear some type of face covering or mask to help limit the spread of the coronavirus to those around them. Other higher-risk jobs may require respirators to protect the worker from infection by patients or clients.

Under the requirements, **employers must provide the face coverings and masks to employees at no charge.** Workers can bring their own face coverings and masks as well, as long as they meet requirements.

Exceptions to mask requirements

There are some *limited* exceptions to the workplace requirements for masks and face coverings. For example, someone working alone in an office, vehicle, or at a jobsite with no in-person interactions is not required to wear a face covering or mask. All businesses (with employees), this means that employees will be required to wear a cloth or surgical mask while working.

Other exceptions include workers who are deaf or hard of hearing, or a person on the job who communicates with someone who relies on language cues such as facial markers and expression and mouth movements as a part of communication. A worker with a medical condition or disability that makes wearing a facial covering inappropriate is also exempt from the requirement.

Resources:

Check out ICM's website for more safety and COVID-19 resources!

Integrated Claims Management, Inc: www.icmoly.com

DOSH Directive 1.70: <https://lni.wa.gov/dA/36e85758be/DD170.pdf>

Which Mask to Wear: https://www.lni.wa.gov/forms-publications/F414-168-000.pdf?utm_medium=email&utm_source=govdelivery

Washington Coronavirus Hazard Considerations for Employers (except COVID-19 care in hospitals & clinics) Face Coverings, Masks, and Respirator Choices: <https://www.lni.wa.gov/agency/docs/wacoronavirushazardconsiderationemployers.pdf>